

“the bright choice
for your **lighting**
application,,



The New Diamond Lux Line



*Passion for
expertise*

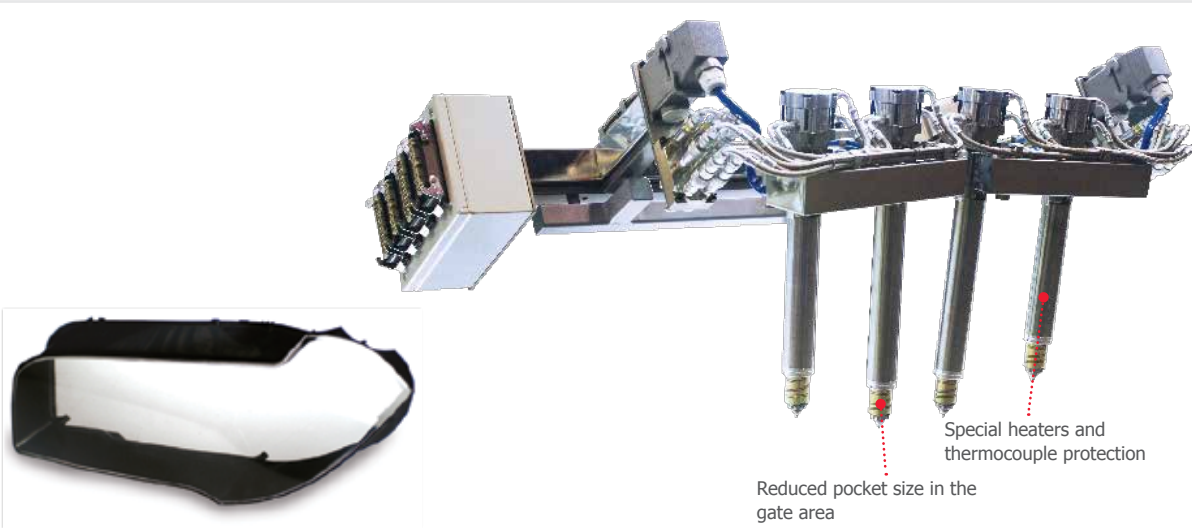
The New Diamond Lux Line:

the turnkey solution particularly suitable for molding surfaces with high thermal and aesthetic requirements

HRSflow twenty-five years of experience has allowed to develop a new hot runner system line, called Diamond Lux, particularly suitable for molding PC components that require high aesthetic qualities. This line is suitable for molding any Front Headlamp components for the automotive industry: housings, bezels and especially lenses molded in PC or PC-HT.

This new line finds its perfect application also in the innovative Plastic Glazing sector where Quarter Windows and Panoramic Roofs formerly manufactured in Silica Glass are now molded in Polycarbonate by using the multishot technology to integrate possible fixing elements for an easier and faster assembling.

The entire hot runner is made of a special steel with a coating able to avoid polycarbonate degradation, thereby preventing the risk of unaesthetic black spots on crystal clear applications such as lenses and window panels. The results are less scraps and higher productivity.



MAIN BENEFITS

- ✓ +/- 10C (+/- 18F) temperature tolerance guaranteed through the whole hot runner system
- ✓ Optimal vestige quality
- ✓ Reduced energy consumption
- ✓ Optimal thermal control
- ✓ Special protection for heaters and thermocouples
- ✓ Reduced pocket size

TECHNICAL FEATURES:

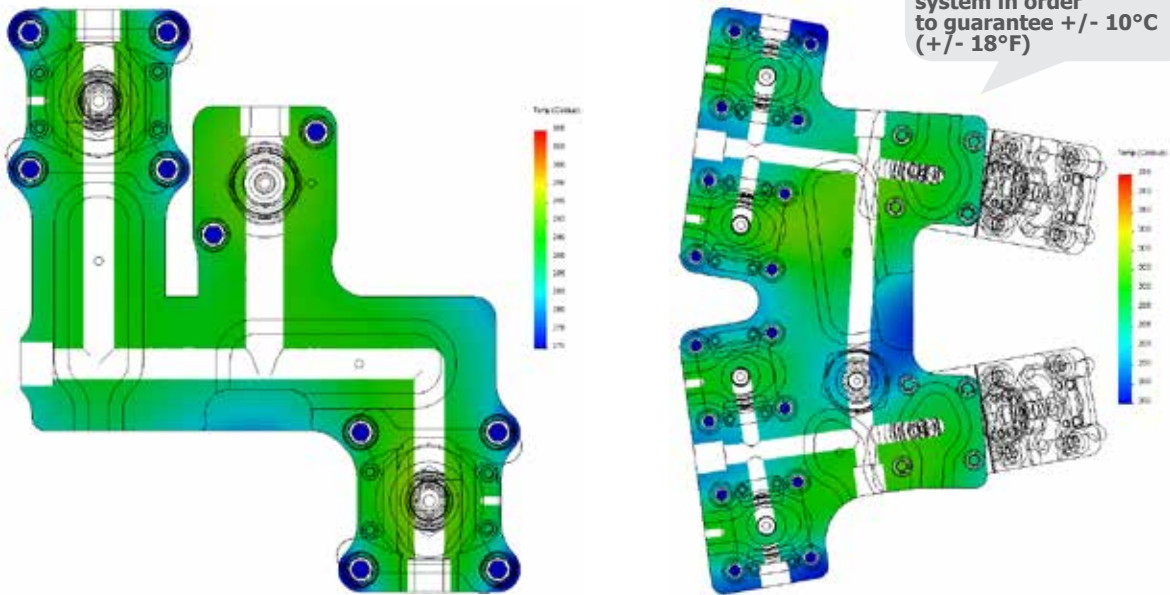
Screwed-in system

- Reduced thermal power dissipation between hot runner and mold;
- Trouble-free heater;
- Optimum system / mold integration;
- All nozzles are positioned in the second level of the system to guarantee perfect alignment between valve pin and nozzle bore.

Optimized thermal distribution in the manifolds

- All contacts between hot runner and the mold are made in low conductivity material;
- Heaters are symmetrically positioned in the manifold (top and bottom sides);
- Optimized heater design to guarantee a thermal profile in the manifold +/- 10°C (+/-18°F).

THERMAL PROFILE OF THE MANIFOLDS



LIGHTING TEAM

HRSflow has established a dedicated team to manage lighting applications in order to maximize the resources for the continuous improvement of this line.

The team handles the following activities:

- ❖ Feasibility studies with dedicated analysts
- ❖ Dedicated designers for the design and check phases
- ❖ Service application engineering to manage complex project

*Our Expertise,
your Top Quality*



Optimized thermal distribution in the nozzles

- Different thermal zones depending on nozzle length;
- All the installed heater elements are made of brass;
- Aluminum spacers used between brass heaters.

Optimized tip

- Bi-component solution for optimal temperature in the gate area;
- Optimal performance also with high-injection pressure.



Via Piave, 4
31020 S.Polo di Piave (TV) I
Tel. +39 0422 750111
Fax. +39 0422 750301
info@hrsflow.com www.hrsflow.com



Space for contact reference

Find us!
Download our
worldwide network!



DIAMOND LUX Rev01 01.16